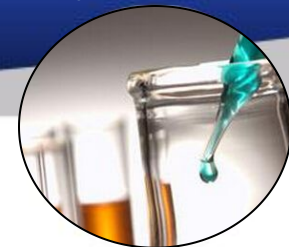




HUCHINBELT

***ROLLER COVERING
HIGH-QUALITY PRODUCTS, FIRST-RATE SERVICE***



The highest possible standards of HUCHIN roller covering for all textile processing and conveyor applications.

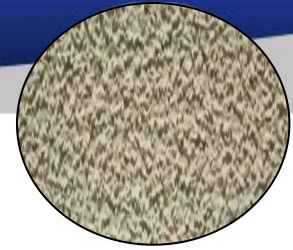
Material Type:

- * Synthetic rubber, Natural rubber, Sponge rubber
- * PVC
- * Felt, nylon
- * Silicone
- * Teflon, Cork
- * Special customized materials

Advantage:

- *Self adhesive for most of types.
- *Wide choice of roll length and width.





Grit pattern
Code:W1320

Material:Synthetic rubber
Thickness:2.0mm /2.5mm
Max.Working Temp.:110°C
Length:50M,100M,110M
Width:38MM,50MM,75MM,100MM,300MM,500MM,1000MM.

More color choice: Grey,Black,Red,Orange,Blue.



Flat topped shape edged pimples pattern

Code:W1424

Material:Synthetic rubber

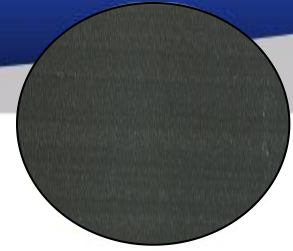
Thickness:2.4mm

Max.Working Temp.:100°C

Length:50M,100M

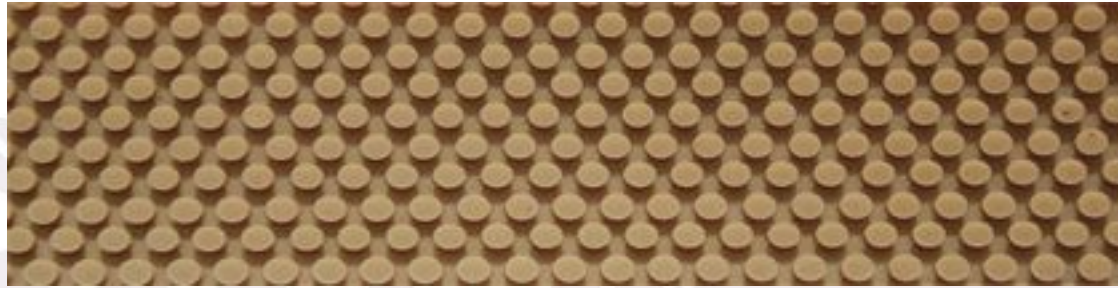
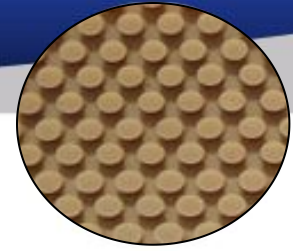
Width:38MM,50MM,75MM,100MM

More color choice: Blue.



Grinded pattern
Code:G1220

Material:Synthetic rubber
Thickness:2.0mm /2.5mm
Max.Working Temp.:120°C
Length:50M,100M
Width:38MM,50MM,75MM,100MM,300MM,500MM.



Flat topped shape edged pimples pattern

Code:T1422

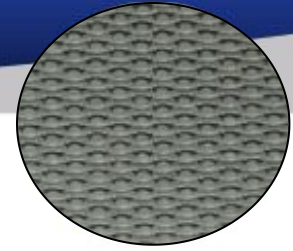
Material:Synthetic rubber

Thickness:2.2mm

Max.Working Temp.:100°C

Length:50M,100M

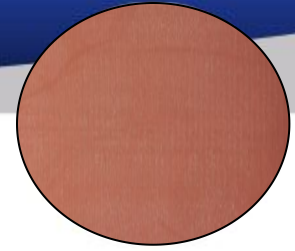
Width:50MM,75MM,100MM,300MM,500MM.



Honeycomb pattern
Code:T1522

Material:Synthetic rubber
Thickness:2.0mm
Max.Working Temp.:100°C
Length:50M,100M
Width:50MM,75MM,100MM,300MM,500MM.

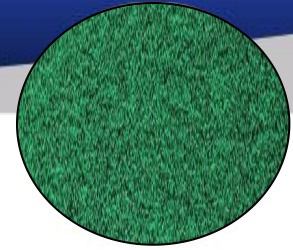
More color choice: Blue,yellow.



Flat pattern
Code:R1122

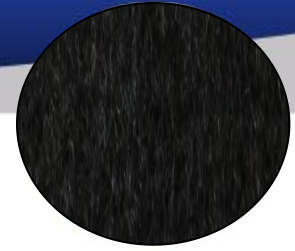
Material:Synthetic rubber
Thickness:2.0mm
Max.Working Temp.:90°C
Length:50M,100M
Width:50MM,75MM,100MM.

More color choice: Clear,white,black,greyl,blue,yellow.



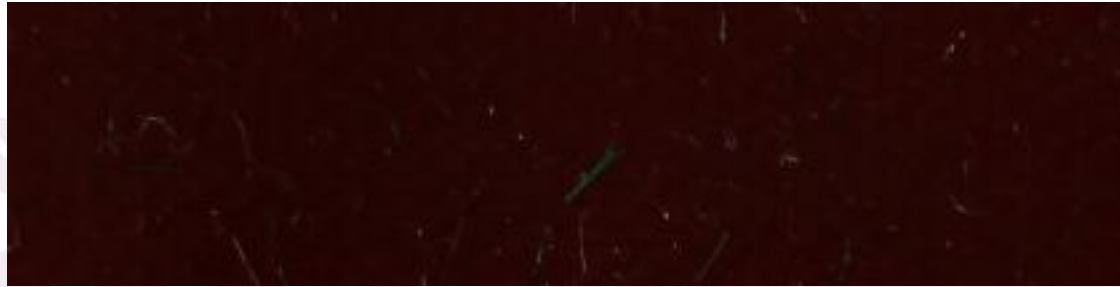
Velvet pattern
Code:D6730

Material:nylon
Thickness:3.0mm
Max.Working Temp.:80°C
Length:50M,100M
Width:25MM,50MM,100MM.



Velvet pattern
Code:B6740

Material:felt
Thickness:4.0mm /6.0mm /8.0mm
Max.Working Temp.:120℃
Length:50M
Width:50MM,100MM.



Flat pattern
Code:R8104

Material:teflon
Thickness:0.4mm
Max.Working Temp.:260°C
Length:100M
Width:50MM,100MM.



Rough top pattern

Code:B1643

Material:synthetic rubber

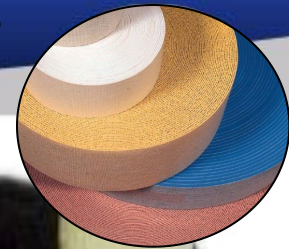
Thickness:4.3mm

Max.Working Temp.:120°C

Length:50M,100M

Width:50MM,75MM,100MM.

ROLLER COVERING for textile machinery and conveyor drives



Numbering Rule:

Eg: Code-W1320

W 1 3 20
↓ ↓ ↓ ↓
Color Material Pattern Thickness 2.0mm

B —black	1 —synthetic rubber	1 —flat surface
C —clear	2 —natural rubber	2 —grindered
D —green	3 —sponge rubber	3 —grit
E —blue	4 —PVC	4 —flat topped shape edged pimples
G —grey	5 —PU	5 —honeycomb
O —orange	6 —felt	6 —rough top
R —red	7 —silicone	7 —velvet
T —tan	8 —teflon	
W —white	9 —cork	
Y —yellow		